



# CC6500 SERIES CONCRETE SAW

*Cessco Inc.*

Toll Free 1-800-882-4959

## 65 HP Production Concrete Saw

The most options and choices  
for the contractor in the industry  
(build it your way)

Forward  
positioned  
motor

One hand  
sawing control

Strongest  
frame in the  
industry

Shown with optional  
Spot Light Kit and  
Wisconsin Oil Cooler Kit

Fits through a  
36" door

Choice of 14" through 48"  
blade guards

Maximum cutting depth 14-3/4" with 36" guard  
(19-3/4" with optional 48" conversion kit)

Core Cut® frames are the  
best in the business, which  
improves your blade cutting  
speed and life.



Large Concrete Saws



# CC6500 SPECIFICATIONS



CC6500 Control Panel

## Cutting Depth Chart

Blade Diameter	14"	20"	26"	30"	36"	42"	48"
Cutting Depth	4-5/8"	7-5/8"	10-5/8"	11-3/4"	14-3/4"	16-3/4"	19-3/4"

## CC6500 Specifications

Maximum Depth of Cut: 14-3/4" (19-3/4" with optional 48" conversion kit)
Blade Shaft Diameter: 1-3/4"
Arbor Diameter: 1" with single drive pin
Blade Shaft Bearings: Self-aligning double concave roller
Blade Shaft Drive: 8 or 10 belt
Blade Mounting: Right or left
Blade Raise and Lower: Electro-hydraulic pump
Blade Coolant: Dual multi-spray tubes
Blade Guard Attachment: Slip-on through 30", Bolt-on 36" and up
Front Wheel Dimensions: 8" x 3" x 1"
Rear Wheel Dimensions: 10" x 3" x 1-1/4"
Handle Bars: Tilt
Transmission: Sundstrand-Sauer or Eaton Model 10
Drive Speed: 0-200 feet per minute
Air Filter: 4 stage
Fuel Capacity: 9 gallons
Electric Start: Standard
High Temperature Shut-Off: Standard
Low Oil Alert: Pressure gauge
Hour Meter: Standard
Tachometer: Optional
Amp Meter: Standard
Cutting Depth Indicator: Standard
Quick Disconnect Blade Flanges: Standard

## CC6500 Saws

Model No.	Engine Type	Sundstrand P/N	Sundstrand Cat. No.	Eaton P/N	Eaton Cat. No.	Blade Capacity	Uncrated Wt. ♦
CC6565-10-14	65 HP Wisconsin	5800121	48494	5800040	02236	14"	1420 lbs.
CC6565-10-20	65 HP Wisconsin	5800122	02284	5800041	02237	20"	1430
CC6565-10-26	65 HP Wisconsin	5800128	02285	5800049	02238	26"	1440
CC6565-10-30	65 HP Wisconsin	5800129	02286	5800050	02239	30"	1455
CC6565-10-36	65 HP Wisconsin	5800130	02287	5800051	02240	36"	1465
CC6540E-8-20 †	40 HP Lincoln Electric (460V)*	5800211	48496	5800187	48502	20"	1415
CC6540E-8-26 †	40 HP Lincoln Electric (460V)*	5800212	48497	5800045	48503	26"	1425
CC6540E-8-30 †	40 HP Lincoln Electric (460V)*	5800213	48498	5800070	48504	30"	1440
CC6540E-8-36 †	40 HP Lincoln Electric (460V)*	5800214	48499	5800046	46921	36"	1450

\* Free wheeling clutch standard on all electric saws. 575V available on request.

† Includes motor starter switchbox.

♦ Add 100 lbs. for crated wt.

All CC6500 saws come standard with quick-release bladeshaft/ flange, slip-on blade guards, bladeshaft tachometer, quick-release rear wheels and double concave roller bearings.

## CC6500 Options

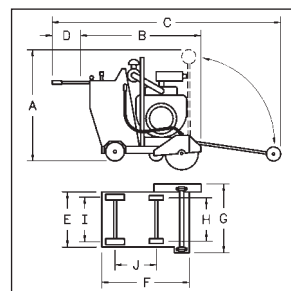
Description	P/N	Cat. No.
42" Blade Capacity Conversion Kit for Gas Saw	6010274	48509
48" Blade Capacity Conversion Kit for Gas Saw	6010275	48510
42" Blade Capacity Conversion Kit for Electric Saw	6010276	48511
48" Blade Capacity Conversion Kit for Electric Saw	6010277	48512
Free Wheeling Clutch +	6010179	02459
Water Safety Switch	6047932	47451
Water Pump (electric)	6011032	02506
Spot Light	6010112	02427
Magnetic Spot Light	6011170	47551
Vertical Muffler	2700143	00587
Oil Cooler for 65 HP Wisconsin engine	6010181	02460
Shaft Tachometer	6010226	02479
Lowering Speed Metering Valve	6010227	02480
Soft Start Controller Add On ♦	6010228	02481
Parking Brake	6011228	81191
Extended Blade Shaft Kit for spacing blades 3/4" to 1-1/2"	6010249	48094
Extended Blade Shaft Kit for spacing blades 1-1/2" to 2-1/4"	6010229	02482
Extra Blade Guards:		
14" Capacity (slip-on)	6010070	02395
20" Capacity (slip-on)	6010072	02397
26" Capacity (slip-on)	6010074	02398
30" Capacity (slip-on)	6010076	02399
36" Capacity	6010260	47088
42" Capacity	6010143	02442
48" Capacity	6010145	47091

+ For use with Sundstrand-Sauer transmission only. Standard on all electric saw models.

♦ For electric saws-factory installed.

## CC6500 Dimensions

A	Saw Height	52-5/8"
B	Min Length Pointer Up, Handle In	62-1/2"
C	Max Length Pointer Down, Handle Out	124"
D	Handle Extension	24"
E	Frame Width	27-5/8"
F	Frame Length	49-1/2"
G	Saw Width	36"
H	Front Axle Center Length	21-3/4"
I	Rear Axle Center Length	24-1/2"
J	Wheel Base Length	23-7/8"
K	Blade Shaft Max Height	19-1/2"



Crated Saw Dimensions: 65" long x 40" wide x 60" high



# CC6560XLS

## 61 HP TURBO DIESEL SAW

Many innovations and improvements make this fuel efficient, fast cutting and reliable 61 HP saw even better

61 HP turbo charged diesel engine  
(Uses half the fuel of a gas saw)

Less rear end weight for easy maneuverability and reduced operator fatigue

Strongest frame on the market

Fits through a 36" door



Choice of 14" through 36" blade guards

Maximum cutting depth 14-3/4" with 36" guard

Conventional 10 v-belt direct drive system

### CC6560XLS Saw Improvements - A Great Saw Just Got Better!

- ◆ Quieter horizontal muffler with durable attachment
- ◆ Enclosed and hardened gears/chains for longer service life of transmission
- ◆ Reinforced and stiffened base frame for reduced warping
- ◆ Zero side load PTO (no side load or thrust load on the engine)
- ◆ Greater cutting depth for 26" blade guard model
- ◆ New 14" set-up with 2800 rpm blade speed
- ◆ Choice of 3.6" or 4.0" engine sheaves for either low speed or longer belt life
- ◆ Easy to replace banded belts
- ◆ Improved depth indicator and depth stop
- ◆ Hardened gears on wheel drive
- ◆ Reliable rotary tensioner for transmission belt
- ◆ Enclosed end drive that protects gear and chain
- ◆ Quick oil drain valve
- ◆ Hardened skid plates
- ◆ Reinforced upright, pump attachment and battery support

# CC6560XLS SPECIFICATIONS



CC6560XLS Control Panel

CC6560XLS Specifications	
Maximum Depth of Cut:	14-3/4"
Blade Shaft Diameter:	1-3/4"
Arbor Diameter:	1" with single drive pin
Blade Shaft Bearings:	Self-aligning double concave roller
Blade Shaft Drive:	10 belt
Blade Mounting:	Right or left
Blade Raise and Lower:	Electro-hydraulic pump
Blade Coolant:	Dual multi-spray tubes
Blade Guard Attachment:	Slip-on through 30", Bolt-on 36"
Front Wheel Dimensions:	8" x 3" x 1"
Rear Wheel Dimensions:	10" x 3" x 1-1/4"
Handle Bars:	Tilt
Transmission:	Sundstrand-Sauer or Eaton Model 10
Drive Speed:	0-200 feet per minute
Air Filter:	4 stage
Fuel Capacity:	9 gallons
Electric Start:	Standard
High Temperature Shut-Off:	Gauge and Warning Light
Low Oil Alert:	Warning Light
Hour Meter:	Standard
Tachometer:	Standard
Amp Meter:	Warning Light
Cutting Depth Indicator:	Standard
Quick Disconnect Blade Flanges:	Standard
Frame Lift:	Standard
Quick Release Rear Wheels:	Standard

Cutting Depth Chart					
Blade Diameter	14"	20"	26"	30"	36"
Cutting Depth	4-5/8"	7-5/8"	10-5/8"	11-3/4"	14-3/4"

CC6560XLS Saws							
Model No.	Engine Type	Eaton Part No.	Eaton Cat. No.	Sundstrand Part No.	Sundstrand Cat. No.	Blade Capacity	Uncrated Wt. *
CC6560XLS-14	61 HP Deutz Turbo Diesel	5800750	86489	5800755	86494	14"	1,420 lbs.
CC6560XLS-20	61 HP Deutz Turbo Diesel	5800751	86481	5800756	86495	20"	1,430
CC6560XLS-26	61 HP Deutz Turbo Diesel	5800752	86491	5800757	86496	26"	1,440
CC6560XLS-30	61 HP Deutz Turbo Diesel	5800753	86492	5800758	86497	30"	1,455
CC6560XLS-36	61 HP Deutz Turbo Diesel	5800754	86345	5800759	86498	36"	1,455

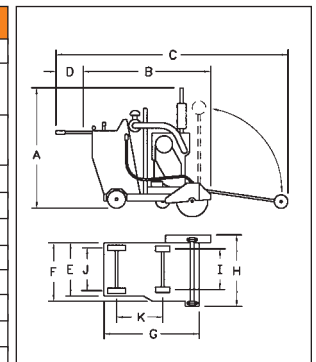
All CC6560XLS saws come standard with quick-release bladeshaft/flange, slip-on blade guards, bladeshaft tachometer, quick-release rear wheels and double concave roller bearings. \* Add 100 pounds for crated weight.

CC6560XLS Options			
DESCRIPTION	P/N	Cat. No.	
Free Wheeling Clutch *	6010179	02459	
Water Safety Switch	6010522	67821	
Water Pump (electric)	6011032	02506	
Spot Light	6010112	02427	
Lowering Speed Metering Valve	6010227	02480	
Parking Brake	6011228	81191	
Glow Plug	6010596	70748	
Blade Stacking Kit ** (up to 1-1/2" width)	6010630	70751	
Blade Spacing Kit ** (up to 2" width)	6010631	70752	
Blade Spacing Kit ** (up to 4" width)	6010632	70753	
Side Plunge Kit ** (up to 6" width) 1-3/4" arbor	6010633	70754	
Extra Blade Guards:			
14" Capacity (slip-on)	6010600	70755	
20" Capacity (slip-on)	6010602	67817	
26" Capacity (slip-on)	6010604	67818	
30" Capacity (slip-on)	6010606	67819	
36" Capacity (bolt-on)	6010608	67820	

\* For use with Sundstrand-Sauer transmission only.  
 \*\* For 20" maximum blade capacity.

CC6560XLS Dimensions		
A	Saw Height	63"
B	Min Length Pointer Up, Handle In	60"
C	Max Length Pointer Down, Handle Out	124"
D	Handle Extension	24"
E	Frame Width (rear)	27-5/8"
F	Frame Width (front)	31-1/4"
G	Frame Length	49-1/2"
H	Saw Width *	37-1/8"
I	Front Axle Center Length	21-3/4"
J	Rear Axle Center Length	24-1/2"
K	Wheel Base Length	23-7/8"
L	Blade Shaft Max Height	19-1/2"

\* Saw width is reduced by removing blade guard to permit entry through a 36" opening.



Crated Saw Dimensions:  
64" long x 44" wide x 69" high



Large Concrete Saws