



M-1 DRILL RIG

Our Best Selling Core Rig

- ◆ 1" to 10" bit capacity (14" with one spacer)
- ◆ Dual switch/outlet control panel & amp meter
- ◆ Slide handle permits drilling in tight areas
- ◆ Streamlined base and carriage
- ◆ 2-1/2" square column with black oxidized finish
- ◆ Quick changeover from vacuum to anchor base
- ◆ 6" wheels for better mobility

Order Complete:

Our Combination rig includes a combination anchor/vacuum base, mast, carriage, control panel, vacuum pump, ceiling jack, motor mount plate and your choice of drill motor. Our Anchor rig is the same as above except for its smaller anchor base and does not include a vacuum pump. Select from P/N's listed below.

M-1 Complete Drill Rigs

Motor	RPM	Safety Override	Combination Rig P/N	Anchor Rig P/N
20 Amp Core Bore	350/900	Slip Clutch	4245055	4545001
20 Amp Milwaukee	300/600	Slip Clutch	4245048	4245009
20 Amp Milwaukee	450/900	Slip Clutch	4245059	4245003
20 Amp Milwaukee	600/1200	Slip Clutch	4245049	4245010
15 Amp Milwaukee	500/1000	Slip Clutch	4245051	4245006
15 Amp Milwaukee	375/750	Slip Clutch	4245052	4245007
23 Amp Weka DK22	300/640/960	Slip Clutch	4245053	4245008
23 Amp Weka DK22S	420/880/1300	Slip Clutch	4245046	4245011



M-1 Complete Combination Rig
(20 Amp DeWalt - Part No. 4245055)

Or, Build Your Own:

Select one of the drill stands shown below, add drill motor, control panel/on-off switch, and vacuum pump as required for your application. Drill stands include a base, mast*, carriage, ceiling jack and motor mount plate.

* Call factory for special length masts

Location to drill anchor hole:

12" = M-1 Combo Rig; 12-1/2" = M-1 Anchor Rig
Measured from the center of the motor spindle to the center of the anchor/vacuum slot on the rig base.

Combination Drill Stand Only *		Anchor Drill Stand Only *	
Standard P/N 4245065	Angle P/N 4245062	Standard P/N 4246055	Angle P/N 4246070

* Motor mount (part number 4648004) required if using a WEKA drill motor with M-1 combination or M-1 drill stand.

M-1 Drill Stand Dimensions

	Anchor Stand	Combination Stand	
A.	43-3/4"	44-1/4"	
B.	24-1/2"	24-1/2"	
C.	5-5/8"	5-5/8"	
D.	2-1/4" (square)	2-1/4" (square)	
E. *	11"	17"	
F.	16"	23"	
G.	6" (width)	13-1/2" (width)	
H.	23-1/2"	18-1/2"	

* For Core Bore motors





M1-AA-15 DRILL RIG



M1-AA-15 Complete Drill Rig
(15 amp, 3.5HP - Part No. - 4220050)

Convenience and Durability in a Light Weight Rig

- ◆ 6 inch bit capacity
- ◆ Weighs only 45 lbs.
- ◆ 15 amp, 3.5 HP Core Bore Motor
- ◆ Single speed - 800 RPM
- ◆ Very durable and reliable
- ◆ Water hose connection
- ◆ Spring loaded slide handle for easy coring
- ◆ Convenient carrying handle on carriage
- ◆ Includes a water trap ring



Water trap ring
(P/N 2704100)



Location to drill anchor hole = 9-1/2"
Measured from the center of the motor spindle to the center of the anchor/vacuum slot on the rig base.

M1-AA-15 Dimensions

	Size	
A.	30"	
B.	15"	
C.	6-7/8"	
D.	21"	
E.	5-1/4"	
F.	8-1/2"	





M-2 DRILL RIG

The #1 Pro Rig In America

- ◆ Dual switch/outlet control panel & amp meter
- ◆ 4 Spoke Handle
- ◆ Precision ground & chrome plated 2-7/8" square mast
- ◆ Quick changeover from vacuum to anchor base
- ◆ 10" bit capacity (up to 36" with spacers and a hydraulic motor and pillow block)
- ◆ 6" wheels for better mobility

Order Complete:

Our Combination rig includes a combination anchor/vacuum base, mast, carriage, control panel, vacuum pump, ceiling jack, motor mount plate and your choice of drill motor. Our Anchor rig is the same as above except for its smaller anchor base and does not include a vacuum pump. Select from P/N's listed below.



M-2 Complete Combination Rig
(23 Amp WEKA- Part No. 4241068)

M-2 Complete Drill Rigs

Motor	RPM	Safety Override	Combination Rig P/N	Anchor Rig P/N
20 Amp Core Bore	350/900	Slip Clutch	4241050	4541001
20 Amp Milwaukee	300/600	Slip Clutch	4241048	4241009
20 Amp Milwaukee	450/900	Slip Clutch	4241059	4241003
20 Amp Milwaukee	600/1200	Slip Clutch	4241049	4241010
15 Amp Milwaukee	500/1000	Slip Clutch	4241051	4241006
15 Amp Milwaukee	375/750	Slip Clutch	4241054	4241007
23 Amp Weka DK22	300/640/960	Slip Clutch	4241068	4241008
23 Amp Weka DK22S	420/880/1300	Slip Clutch	4241069	4241011

Or, Build Your Own:

Select one of the drill stands shown below, add drill motor, control panel/on-off switch, and vacuum pump as required for your application. Drill stands include a base, mast*, carriage, ceiling jack and motor mount plate.

* Call factory for special length masts

Location to drill anchor hole:

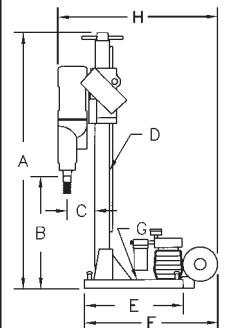
12" = M-2 Combo Rig;

12" = M-2 Combo Rig; 12-1/2" = M-2 Anchor Rig (Web)

Anchor Drill Stand *		Combo Drill Stand *		Large Anchor Drill Stand * P/N 4241064
Std. P/N 4241100	Angle P/N 4241110	Std. P/N 4241055	Angle P/N 4241056	

M-2 Drill Rig Dimensions

	Anchor Stand	Combo Stand	Large Anchor
A.	44"	44"	44"
B.	23-1/2"	23-1/2"	23-1/2"
C.	5-1/2"	5-1/2"	5-1/2"
D.	2-7/8" (square)	2-7/8" (square)	2-7/8" (square)
E.*	12-1/2"	17"	18-1/2"
F.	17-1/4"	23"	20-1/2"
G.	7"	13-1/2"	15"
H.	23-3/4"	28-1/2"	27"



* For Core Bore motors

* Motor mount (part number 4648033) required if using a WEKA drill motor with M-2 anchor, M-2 combination or M-2 large anchor drill stand.





M-4 RIG

3 Speed, Very Powerful and Just 35 lbs

- ◆ Weighs only 35 lbs. (rig -20 lbs., motor -15 lbs.)
- ◆ 6" bit capacity (3" handheld)
- ◆ Converts to hand held drill motor in seconds
- ◆ Combination Stand quickly angles to 45 degrees
- ◆ 3-speed hand held drill motors with overload clutches are available with choice of 110V electric, 220V electric, air or hydraulic power
- ◆ Mast can rotate 360 degrees on swivel stand
- ◆ Reversible slide handle (use on left side or right side of rig)
- ◆ High strength, hard anodized, 1-1/2" x 2" aluminum column
- ◆ 4 adjustable slide bearings provide superior carriage rigidity
- ◆ Carriage Lock



M-4 Complete Combination Rig
(14 Amp WEKA Part No. 4240001)
Bit not included



WEKA DK12 Hand Held Drill
580/1400/2900 RPM (Part No. 4244017)



The WEKA DK12 Hand Held Drill works well with our thinwall handheld bits

Location to drill anchor hole:

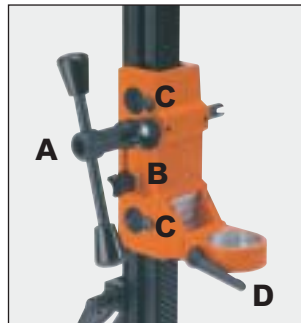
9-3/4" = M-4 Combo Rig;

9-1/4" = M-2 Anchor Rig; 11-1/2" = M-2 Swivel Rig

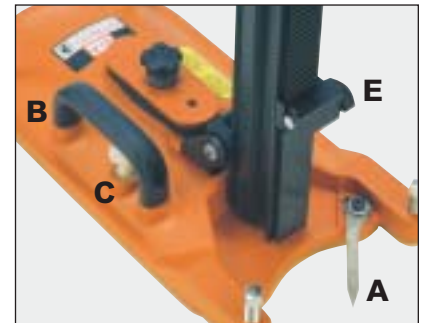
Measured from the center of the motor spindle to the center of the anchor/vacuum slot on the rig base.

M-4 Drill Rig Dimensions

Combo Stand	
A.	33-1/8"
B.	19-3/4"
C.	7-7/8"
D.*	21-3/8"
E.*	3-5/8"
F.	16-7/8"



- A Reversible slide handle
- B Carriage lock
- C Adjustable slide bearings
- D Handheld motor quick release



- A Centering Pointer
- B Lifting Handle
- C Quick vacuum release valve
- D Locking slot cap
- E Depth Stop

* For Weka motor





M-4 RIG



Available with Swivel and Anchor Bases for Added Drilling Versatility

Complete M-4 Combination Drill Rigs

Motor	RPM	Safety Override	Combo Rig P/N
14 Amp WEKA DK12	580/1400/2900	Slip Clutch	4240001
15 Amp Milwaukee	500/1000	Slip Clutch	4240002
15 Amp Milwaukee	375/750	Slip Clutch	4240003
20 Amp Milwaukee	300/600	Slip Clutch	4240004
20 Amp Milwaukee	450/900	Slip Clutch	4240005
20 Amp Milwaukee	600/1200	Slip Clutch	4240006
7 Amp WEKA DK12 (230V)	580/1400/2900	Slip Clutch	4240009

M-4
Combination
Stand
Part No. 4240020



M-4 Complete Anchor Drill Rigs

Motor	RPM	Safety Override	Anchor Rig P/N
14 Amp WEKA DK12	580/1400/2900	Slip Clutch	4240010
15 Amp Milwaukee	500/1000	Slip Clutch	4240011
15 Amp Milwaukee	375/750	Slip Clutch	4240012
20 Amp Milwaukee	300/600	Slip Clutch	4240013
20 Amp Milwaukee	450/900	Slip Clutch	4240014
20 Amp Milwaukee	600/1200	Slip Clutch	4240015
7 Amp WEKA DK12 (230V)	580/1400/2900	Slip Clutch	4240016

M-4 Complete Swivel Drill Rigs

Motor	RPM	Safety Override	Swivel Rig P/N
14 Amp WEKA DK12	580/1400/2900	Slip Clutch	4240030
15 Amp Milwaukee	500/1000	Slip Clutch	4240031
15 Amp Milwaukee	375/750	Slip Clutch	4240032
20 Amp Milwaukee	300/600	Slip Clutch	4240033
20 Amp Milwaukee	450/900	Slip Clutch	4240034
20 Amp Milwaukee	600/1200	Slip Clutch	4240035
7 Amp WEKA DK12 (230V)	580/1400/2900	Slip Clutch	4240036



M-4 Swivel Stand



M-4 Anchor Stand



Bit
not
included

Simple Angle
Adjustment



Convenient WEKA
Carrying Case (Part No. 2701483)

Core Rigs: M-4





M-5 RIG

The M-5 Rig combines the drilling precision of the M-2 Pro Rig with the portability of our M-4 Rig

- ◆ The most lightweight rig of any in its class (combo stand, wheel kit and switch box weighs just 52 lbs.)
- ◆ 12-inch bit capacity (up to 36" with spacers and hydraulic motor and power pack)
- ◆ Easy quick-disconnect motor mount
- ◆ Angle drilling capability up to 45°
- ◆ Easily adjustable slide bearings
- ◆ Longer columns available up to 60"
- ◆ Quick release vacuum button
- ◆ Extruded all aluminum lightweight column built with strength and hard anodized for wear
- ◆ Double column support for increased stability
- ◆ Positive carriage lock
- ◆ 4-spoke sliding handle (can be used on either side)
- ◆ Available with choice of electric, hydraulic or air motors
- ◆ Convenient easy carrying handle (ceiling jack available)
- ◆ Very affordably priced!



The M-5 Drilling System

M-5 Complete Combo Rig shown with DK22 Motor
(Part No. 4220001)



Easy, Quick Disconnect Motor Mount





ELECTRIC MOTORS



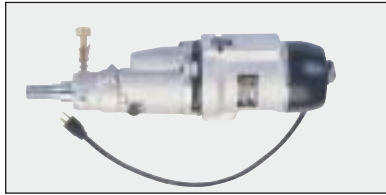
WEKA DK12
Hand held and portable
Part No. 4244017



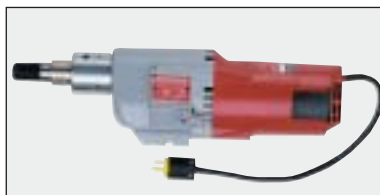
WEKA DK22 and DK22S
23 amp, 3 Speed, 110V
Part No. 4244014



WEKA DK42 and DK42S 230V
Very powerful, 3 Phase
Part No. 4244022



CB748 Core Bore 20 Amp
Part No. 4244000



Milwaukee
Wide variety of
15 and 20 amp models
Part No. 4244032 (20 amp)



WEKA SR35
9 Speed 230V - 16 amp
Part No. 4244064

Electric Motors

Motor	AMP	RPM	SAFETY OVERRIDE	P/N W/O SWITCH	WITH SWITCH
Core Bore CB748	20	350 / 900	Slip Clutch	4244000	4244005
Core Bore CB748-220	10 amp (230V)	350 / 900	Slip Clutch	4277536	---
Milwaukee Model 4004	20	300 / 600	Slip Clutch	4244032	4244033
Milwaukee Model 4096	20	450 / 900	Slip Clutch	4244038	4244039
Milwaukee Model 4005	20	600 / 1200	Slip Clutch	4244042	4244043
Milwaukee Model 4092-20	15	375 / 750	Slip Clutch	4244025	4244026
Milwaukee Model 4097-20	15	500 / 1000	Slip Clutch	4244030	4244031
Core Bore CB1000	10 amp (230V)	400 / 900	Slip Clutch	4244047	---
Core Bore CB2000	20	400 / 900	Slip Clutch	4244046	---
Core Bore CB3000	20	3000	Slip Clutch	4244045	---
DeWalt Hand Held Dry +	12	1700 / 3000	Slip Clutch	---	4244012
WEKA DK11 **	14	6500	Slip Clutch	---	4244063
WEKA DK12 + *	14	580 / 1400 / 2900	Slip Clutch	---	4244017
WEKA DK12 + *	7 amp (230V)	580 / 1400 / 2900	Slip Clutch	---	4244013
WEKA DK12 + * □	14 amp (110V)	580 / 1400 / 2900	Slip Clutch	---	4244092
WEKA DK13 ▶	14	580 / 1400 / 2900	Slip Clutch	---	4244062
WEKA DK13 ▶ □	14	580 / 1400 / 2900	Slip Clutch	---	4244093
WEKA DK22	23	300 / 640 / 960	Slip Clutch	---	4244018
WEKA DK22	11 amp (230V)	300 / 640 / 960	Slip Clutch	---	4244016
WEKA DK22S	23	420 / 880 / 1300	Slip Clutch	---	4244014
WEKA DK22S	11 amp (230V)	420 / 880 / 1300	Slip Clutch	---	4244029
WEKA DK32	30	230 / 480 / 720	Slip Clutch	---	4244059
WEKA DK32	15 amp (230V)	230 / 480 / 720	Slip Clutch	---	4244058
WEKA SR35 (9 speed)	16 amp (230V)	150 / 300 / 470 200 / 390 / 610 230 / 450 / 710	Slip Clutch	---	4244064
WEKA DK42	6 amp 460V-3PH	190 / 410 / 610	Slip Clutch	---	4244022
WEKA DK42	13 amp 230V-3PH	200 / 420 / 630	Slip Clutch	---	4244023
WEKA DK42S	6 amp 460V-3PH	290 / 605 / 910	Slip Clutch	---	4244027
WEKA DK42S	13 amp 230V-3PH	290 / 610 / 910	Slip Clutch	---	4244024
WEKA DK 52	8 amp 460V-3PH	150 / 290 / 440	Slip Clutch	---	4244060
WEKA DK 52	16 amp 230V-3PH	150 / 290 / 440	Slip Clutch	---	4244061

+ Includes carrying case ▶ Can be used wet or dry □ Features electronic overload protection module

* Includes 1.250-7 and 5/8-11 adapter spindle **Includes M33 extreme-pitch thread



DRILLING ACCESSORIES



Pipe Mount



- ◆ Works on any Core Bore rig
- ◆ Can be used on any size pipe
- ◆ Comes complete with base plate, tie-down strap and hardware
- ◆ Bit capacity depends on rig being used

Complete Pipe Mount Assembly
Part Number - 4400509

M-2 Auto Feed Control Unit

- ◆ Automatically runs your M-2 core rig!
- ◆ Enables the operator to use several core drills at the same time or to do other work while the rig is drilling
- ◆ Saves labor especially in hard aggregate
- ◆ Extremely efficient serial drilling



- ◆ The unit keeps the motor load at the preset value (17 to 24 amps at 115V; 10 to 15 amps at 230V)
- ◆ For use on WEKA DK12 through DK32, CB748 and all Milwaukee drill motors
- ◆ Autofeed unit consists of autofeed box and a 2:1 gear box and roller carriage only

Part number for 115V motor - 5800659
Part number for 230V motor - 5800661



DRILLING ACCESSORIES

Vacuum Pumps



Gast vacuum pumps mount easily and run quietly.

We have pumps designed for each of our rigs or choose a pump for an all purpose base.

Vacuum Pumps		
DESCRIPTION	VOLTAGE	P/N.
Gast 1/8 HP, 24hg Vacuum Pump with Fittings for M-1/M-2	110V	4244075
Gast 1/8 HP, 24hg Vacuum Pump with Fittings for M-1/M-2	220V	4244076
Gast 1/8 HP, 24hg Vacuum Pump with Fittings for M-3/M-4	110V	4244077
Gast 1/8 HP, 24hg Vacuum Pump with Fittings for M-3/M-4	220V	4244079
Gast 1/8 HP, 24hg Vacuum Pump without Fittings	110V	2600016
Gast 1/8 HP, 24hg Vacuum Pump without Fittings	220V	2600017
Gast 1/8 HP, 24hg Vacuum Pump with Fittings for A.P.V. Base	110V	4244078
Gast 1/8 HP, 24hg Vacuum Pump with Fittings for A.P.V. Base	220V	4244080
Gast 1/8 HP, 24hg Vacuum Pump with Fittings for M-5	110V	4244090
Gast 1/8 HP, 24hg Vacuum Pump with Fittings for M-5	220V	4244091

Control Panels



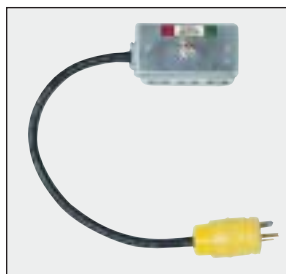
Dual Switch / Dual Outlet Amp Meter

With three red lines- 15, 18 or 20 amp. 110V or 220V models
P/N 4243000/4243075



Single Switch / Dual Outlet Amp Meter

With Switch controls motor outlet and vacuum pump outlet. Amp meter, has three red lines; 15, 18, 20 amp. 110V or 220V models.
P/N 4277537/4277538



Optional On / Off Switch

for Core Bore or Milwaukee Motors
P/N 4244021



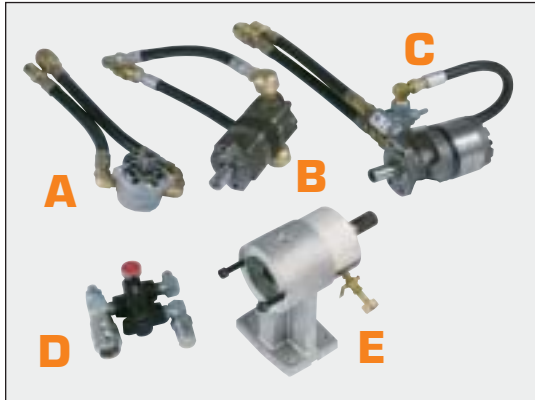
DK42 Control Panel with amp meter, volt meter, motor reversing switch, vacuum pump switch single and three phase outlets (Part No. 4243006)



Phase Converter
Converts single phase to 3 phase for DK42 (Part No. 4243010)

Control Panels			
CONTROL PANEL	FEATURES	VOLTAGE	P/N
Dual Switch/Dual Outlet	Amp Meter	110V	4243000
Dual Switch/Dual Outlet	Amp Meter	220V	4243075
Single Switch/Dual Outlet	Amp Meter	110V	4277537
Single Switch/Dual Outlet	Amp Meter	220V	4277538
Heavy Duty On/Off Switch	Amp Meter	110V	4244021
Heavy Duty On/Off Switch	Amp Meter	220V	4243021

Hydraulic and Pneumatic Drilling Systems



- A. Danfoss Motor - Part No. 4250013
- B. Char-Lynn Motor - Part No. 4250007
- C. White Motor - Part No. 4250010
- D. Flow Control Valve - Part No. 4250019
- E. Pillow Block & Spindle - Part No. 4277539



Part No. 4244057

Hydraulic Motor
Hand Held, 3-speed, Slip Clutch,
13 gallons per minute flow maximum

NEW!

4-Speed Hydraulic Motor

160, 320, 480, 960 RPM
(speeds at 12 GPM)

Minimum RPM - 110
Maximum RPM - 1600

Minimum GPM - 8
Maximum GPM - 20

12" drilling capacity (w/o extension)
24" drilling capacity (with extension)



Part Number - 4250021



Hydraulic Pillow Block for M-4
Part No. 4600039



Flow Control Valve for Char-Lynn Motor
Variable speed control valve that adjusts bit speeds from zero to the maximum rpm your motor allows. Threads directly into motor. Works on any hydraulic motor in addition to Char-Lynn models.
Part No. 4699956

Hydraulic and Pneumatic Components

DESCRIPTION	Part No.
Pillow Block Assembly - 1.250"-7 Spindle	4277539
Pillow Block Assembly - 1.875"-7 Spindle	4277540
Pillow Block Assembly - 1.250"-7 Spindle for M-4 with Danfoss Hydraulic Motors	4277539
Flow Control Valve (Hydraulic motors only)	4250019
Flow Control Valve, Motor Mounted for Char-Lynn Hydraulic Motors only	4699956

Hydraulic Motors

Motor	Displacement	P/N
Danfoss	0.7 cu. in.	4250012
Danfoss	1.1 cu. in.	4250013
Danfoss	1.5 cu. in.	4250014
Danfoss	1.9 cu. in.	4250015
Char-Lynn	4.9 cu. in.	4250008
Char-Lynn	6.2 cu. in.	4250007
Char-Lynn	8 cu. in.	4250006
Char-Lynn	9.6 cu. in.	4250005
Char-Lynn	11.9 cu. in.	4250004
Char-Lynn	14.9 cu. in.	4250002
Char-Lynn	18.7 cu. in.	4250000
Char-Lynn	24 cu. in.	4250003
White	32 cu. in.	4250010
White	45.6 cu. in.	4250011
4 HP Hand Held, 3-Speed w/ Clutch, 300/800/1600RPM		4244057



Part No. 4244053

Pneumatic Motor
Hand Held, 3-speed, Slip Clutch
Choose from 2.1 HP or 3.8 HP



Part No. 4244052

Ingersoll-Rand
3.5 HP Ingersoll-Rand Air Motor
(shown with pillow block)

Air Motors

DESCRIPTION	RPM	SAFETY OVERRIDE	MAX CFM	P/N
2.1 HP Hand Held 3 speed*	300/500/1500	Slip Clutch	77	4244054
3.8 HP Hand Held 3 speed*	190/420/805	Slip Clutch	122	4244053
3.5 HP Ingersoll-Rand	N/A	N/A	95	4244051
8 HP Ingersoll-Rand	N/A	N/A	230	4244052

* Includes 1.250-7 and 5/8-11 Adapters



DRILLING ACCESSORIES

Air Motors

Horsepower	Max CFM	Part No.
3.5	95	4244051
8	230	4244052

Please specify RPM required for your application

Recommended RPM's for Various Bit Sizes

Bit Diameter	1"	2"	3"	4"	6"	8"	10"
Recommended RPM	3200	1600	1050	800	530	400	320

Bit Diameter	12"	14"	18"	20"	24"	36"	42"
Recommended RPM	265	225	175	160	130	85	75

Hydraulic Motor RPM Data

Maximum RPM Values with Various Cubic Inch Displacement/GPM Combinations

GPM	Webster				Char-Lynn								White		
	.7 Cu In	1.1 Cu In	1.5 Cu In	1.9 Cu In	4.9 Cu In	6.2 Cu In	8.0 Cu In	9.6 Cu In	11.9 Cu In	14.9 Cu In	18.7 Cu In	24.0 Cu In	32.0 Cu In	45.6 Cu In	
	4250012	4250013	4250014	4250015	4250008	4250007	4250006	4250005	4250004	4250002	4250000	4250003	4250010	4250011	
8	2640	1680	1232	973	377	298	231	193	155	124	99	77	58	41	
12	N/A	2520	1848	1459	566	447	347	289	233	186	148	116	87	61	
20	N/A	N/A	N/A	2553	990	782	606	505	408	326	259	202	152	106	
25	N/A	N/A	N/A	N/A	1226	969	751	626	505	403	321	250	188	132	

To order a hydraulic motor choose the line with the GPM closest to your hydraulic power unit. Find the RPM needed for your drilling application and go to the top of the chart where you will find the motor size and its part number.

Extensions and Adapters

Made of durable steel

On short notice we can make any style adapter or extension rod to fit your needs!



Large selection in stock and ready for immediate delivery!

Adapters

Catalog No.	Top Thread	Bottom Thread Male	P/N
1015	1.250"-7 Female	5-8"-11	4400008
1015B	1.250"-7 Female	5-8"-11 Bolt*	4400162
1510	5/8"-11 Female	1.250"-7	4400009
1016	1.250"-7 Female	5/8"-18	4400010
1020	1/2"-20 Female	5/8"-11	4400011
Bantum-15	Bantum Female	5/8"-11	4400012
Morse #2	#2 Morse Taper Male	5/8"-11	4400068
Morse #3	#3 Morse Taper Male	5/8"-11	4400061
Morse #4	#4 Morse Taper Male	5/8"-11	4400062
Morse #5	#5 Morse Taper Male	5/8"-11	4400063
3/8" S.S.	3/8" Straight Male Shank	5/8"-11	4400056
1/2" S.S.	1/2" Straight Male Shank	5/8"-11	4400033
5/8" S.S.	5/8" Straight Male Shank	5/8"-11	4400087
01905	1/2" BSP Male	5/8"-11	4400037
01903	1/2" BSP Male	1.250"-7	4400036
01949	1.875"-7 Female	1.250"-7	4400121
01956	1.250" Female	1.875"-7	4400134

Bit Extension Rods

Length	Catalog No.	Fits Bit Size	Thread	P/N
4"	125-4	1-5/8" - up	1.250"-7	4400001
4"	125-4 Water Sprayer	1-5/8" - up	1.250"-7	4400002
6"	120-6	up to 1-1/2"	5-8"-11	4400003
6"	125-6	1-5/8" - up	1.250"-7	4400004
12"	120-12	up to 1-1/2"	5-8"-11	4400005
12"	125-12	1-5/8" - up	1.250"-7	4400006
24"	125-24	1-5/8" - up	1.250"-7	4400042
36"	125-36	1-5/8" - up	1.250"-7	4400007
48"	125-48	1-5/8" - up	1.250"-7	4400024
6"	187-6	Optional Lg. Bits	1.875"-7	4400141
12"	187-12	Optional Lg. Bits	1.875"-7	4400113





DRILLING ACCESSORIES



SpeediThread Adapter and Extensions



Grab the SpeediThread Bit, Twist a Quarter Turn...



And Your Bit Goes On or Off!



The New SpeediThread Bit and Adapter Makes Your Job Speedi!

NEW! SpeediThread Adapter and Extension	
Part Number	Description
4400511	125-4Q, 1-1/4-7 thread, 4" adapter
4400512	125-6Q, 1-1/4-7 thread, 6" extension
4400513	125-12Q, 1-1/4-7 thread, 12" extension

SpeediThread hub must be specified when ordering a bit

Also works on existing 1.250-7 threaded hubs and adapters!

NWJ Core Bit Adapter and Extensions

The Extra Durable Bit Extension That Helps Prevent The Threads From Seizing Up During Deep Hole Drilling



NWJ extension



NWJ adapter



NWJ threaded hub and adapter

NEW! NWJ Core Bit Adapter and Extension	
Part No.	Description
4400322	5' Bit Drill Rod with NWJ Threads
4400323	NWJ Male-1.250-7 Female
4400324	Male 1.250-7 -NWJ Female
4400325	NWJ Male-1.875-7 Female 1-7/8"-7
4400326	Male 1.875-7 -NWJ Female 1-7/8"-7

Virtually eliminates cross threading of threaded core barrels associated with deep hole drilling!

Adapters and Extensions





CLEAN DRILLING ACCESSORIES

Slurry Removal Recirculating System

- ◆ Works with your Core Bore rig as an efficient and easy system for removal of slurry
- ◆ Allows consistent clean water flow to your bit
- ◆ Containment unit traps and filters slurry into internal bag
- ◆ Easy to install and operate

* Core rig and core bit not included



Telescopic Trap Ring for Handheld Weka Drill Motors

(Part No. 2600350) for 7" length
(Part No. 2600359) for 17" length



M-2 Trap Ring Assembly (Part No. 4640074)
M-1 Trap Ring also available (Part No. 4640073)



Water Trap Ring and Pump (Part No. 4400015)

Water and Dust Control	
DESCRIPTION	PART NO.
Slurry Containment System (includes ring assembly and recirculating unit)	4277584
Replacement Bags	4699971
M-1 Trap Ring Assembly for Containment System	4640073
M-2 Trap Ring Assembly for Containment System	4640074
E-400F Water Pressure Tank with Fittings	4400021
E-400 Water Pressure Tank without Fittings	2600042
E-350 8" Water Collector Ring and Teel Pump (115V)	4400015
E-350 Water Collector Ring and Teel Pump (230V)	4400201
E-150 8" Trap Ring Only	4400016
E-450 Teel Pump (115V) for Trap Rings	4400100
E-450 Water Collector (230V) for Trap Rings	4400101
E-250 Wet/Dry Vacuum Hose Adapter	4400017
E-300 Dry Trap for Dry Drilling (specify size - 8" max)	4400018
6" Trap Ring with 1-1/2" Hose Adapter for M-1	4648057
6" Trap Ring with 1-1/2" Hose Adapter for M-2	4648058
7" Trap Ring Telescopic Motor Mount for WEKA DK11/DK12/DK13 on bits up to 1-3/8"	2600350
17" Trap Ring Telescopic Motor Mount for WEKA DK11/DK12/DK13 on bits up to 1-3/8"	2600359



Replacement Bags for Containment Unit (Part No. 4699971)





DRILLING ACCESSORIES



Hydraulic Motor Accessories



Hydraulic Pillow Block
for M-1 and M-2
Adds 4" of Drilling Capacity
1.250"-7 Spindle Part No. 4277539
1.875"-7 Spindle Part No. 4277540



Hydraulic Pillow Block for M-4
Increase Drilling Capacity
to Your M-4 Core Rig
Part No. 4600039

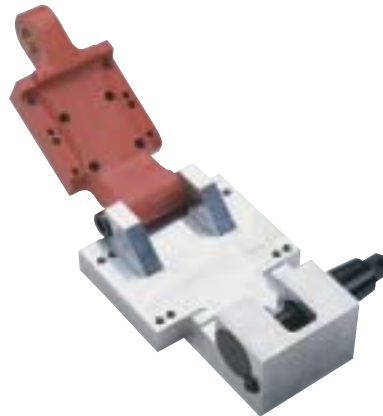


Flow Control Valve
for Char-Lynn Motor
Variable speed control valve that adjusts bit speeds from zero to the maximum rpm your motor allows. Threads directly into motor. Works on any hydraulic motor in addition to Char-Lynn models.
Part No. 4699967

Carriages, Quick Disconnects and Optional Accessories



Power Feed M-6 Roller Carriage
Don't feed bits by hand anymore! Our new hydraulically operated M-6 Roller Carriage offers power carriage raise and lower convenience with an easy to use lever and flow control. Hookup is simple. Also ideal for wire sawing.
Part No. 4640055 (Does not include M-6 Carriage Assembly Part No. 4640031)



M-5 Style Cam Operated Quick Disconnect
Use on M-1 and M-2 Rigs
Part No. 4699961



M-2 Roller Carriage
Adjustable top & bottom eccentric rollers
Part No. 4277531



Optional On/Off Switch
for Core Bore or Milwaukee Motors
110V Part No. 4244021
220V Part No. 4243021



Dovetail Motor Mount Quick Disconnect
Makes motor removal fast and easy for M-1, M-2
Part No. 4648010 or 4648007



Core Bore Stop Box
Shuts down system if bit hits grounded metal conduit
Part No. 4243050





DRILLING ACCESSORIES

Water and Air Swivels - Keep Your Drilling Cool and Efficient



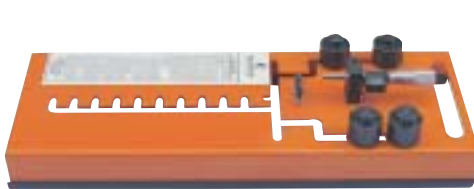
Water 750 HD
P/N 4400013



Water 375 HD
P/N 4400014



Air Vacuum Swivel
P/N 4400125



Blade Gauge with Bit Adapter Kit
Available with digital or dial micrometer
Part No. 4400208 or 4400209



Bit Adapter Kit for Blade Gauge
Part No. 4400218



Portable Water Pressure Tank
4 gallon capacity, all metal construction
Part No. 4400021



Bit Sharpening Pot
Part No. 4400022



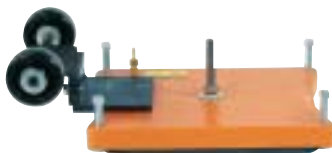
Super Bit Washer
Helps remove bits from spindle
Part No. 4600502



Supernut
3/8"-16, 1/2"-13, or 5/8"-11



50' Cord
12GA 115V 20A Twist to 15A Straight
Part No. 4699100



All Purpose Vacuum Plate with Wheels
Converts anchor base to vacuum base
Fits M-1, M-2 & M-3 anchor bases
P/N 4247075



Concentric Bit Rollers
Part No. CC-BR

Drilling Accessories	
DESCRIPTION	P/N
Core Bore Stop Box - 110V	4243050
M-1 Dovetail Motor Mount Quick Disconnect	4648010
M-2 Dovetail Motor Mount Quick Disconnect	4648007
M-5 Quick Disconnect Outrigger 7" Extension	4400312
M-5 Quick Disconnect Outrigger 10" Extension	4400313
M-5 Style Quick Disconnect	4699960
M-2 Roller Carriage	4277531
Vacuum Plate w/ Wheels (fits any smaller anchor base)	4247075
Water Swivel 1.250"-7 Female to 1.250"-7 Male	4400186
Water Swivel 750 HD 5/8"-11" Female to 1.250"-7 Male	4400013
Water Swivel 750 HD 5/8"-16" Female to 1.250"-7 Male	4400304
Water Swivel 375 HD 5/8"-11" Female to 5/8"-11 Male	4400014
Water Swivel 375 HD 5/8"-16" Female to 5/8"-11 Male	4400303
Vacuum Swivel - 5/8"-11 Female to 1.250"-12 Male	4400125
Vacuum Swivel - 5/8"-16 Female to 1.250"-12 Male	4400302
M-1 (2") Spacer Block (adds 4" of drilling capacity)	4400072
M-2 (2") Spacer Block (adds 4" of drilling capacity)	4400073
M-5 Spacer Block (for electric drill motors only) up to 20" capacity	4600136
M-6 Spacer Block (up to 36" capacity)	4640026
M-6 Spacer Block (up to 48" capacity)	4640025
1-3/8" Spindle Wrench (Dewalt, Milwaukee, Core Bore)	2400010
1-1/4" Spindle Wrench (WEKA)	2400015
Sharpening Pot and Stand	4400022
Segment Brazing Tool	4400023
3/8"-16 Super Nut	4400069
1/2"-13 Super Nut	4400070
5/8"-11 Super Nut	4400071
Plastic Bit Washer 1-1/4"	1400030
Plastic Bit Washer 1-7/8"	1400185
Super Bit Washer 1-1/4"	4600502
Milwaukee Motor Shear Pin	2700178
Blade Measuring Gauge with Digital Micrometer	4400208
Blade Measuring Gauge with Dial Indicator	4400209
Bit Wear Measuring Adapter Kit	4400218
Cord 50 ft. 12GA 115V 20A Twist to 15A Straight *	4699100
Cord 100 ft. 12GA 115V 20A Twist to 15A Straight *	4699101
Cord 50 ft. 10GA 115V 30A Twist to 15A Straight **	4699102
Cord 100 ft. 10GA 115V 30A Twist to 15A Straight**	4699103
M-6 Hydraulic Power Feed Kit +	4640056
M-6 Hydraulic Power Feed Kit with Controls +	4640055

* For Heavy Duty On/Off Switch

** For Single and Dual Switch Control Panel

+ Does not include M-6 Carriage Assembly P/N 4640031



Core Catcher Assembly Part No. 4400327

